

Nelson 16 XL110 - LED Bollard

The **Nelson 16 XL100 LED Bollard** is an environmentally friendly, energy saving replacement for traditional sodium, mercury and halogen style bollards.



The Nelson 16 XL100 LED Bollard is simply styled and designed to suit most architectural fittings. It is ideal for pedestrian walkways, precincts, squares, public and private gardens.

Durable extruded aluminium body and polycarbonate lens providing good levels of vandal resistance.

Black polyester coated finish providing a hard wearing decorative finish.

Sealed to IP55 with silicone gasket seal.

Available root or flange plate mounted.



Specifications: Nelson 16 XL110 – LED Bollard

	AC
Product Code	NB16-A001-C2
Power Consumption LED's	18.24 Watts
Power Consumption Driver	4.5 Watts
Total Power Consumption	22.74 Watts
Input Voltage	90 – 264Vac
Input Frequency	47 – 63Hz
Total LED output	1760 Lumens
Efficiency (Typ.)	85%
LED Colour	White (Standard)
Colour Temp (K)	6000 - 7200 degrees K (Standard)
CRI	Ra>70
LED Lifespan	100,000 Hours
Operating Temperature	-30 degrees C to + 50 degrees C
Working Humidity	0 ~ 95%
Turn on time	100ns
Product Size (mm)	1000mm x 186mm
Material	Aluminium Body and Polycarbonate Lens
Net Weight	6.5 Kg
Mounting	Standard: Root Mounted Option 1: Flange Plate and Root Mount (FIX0054) Option 2: Flange Plate and Bolts (FIX0053)
Protection Rate	IP55
Certification	RoHS, CE
Warranty	3 Years

Gemma LIGHTING LIMITED

Unit 3 , Marshlands Spur
Farlington
Portsmouth
Hampshire
PO6 1RX

Tel: +44 (0) 844 856 5201
Fax: +44 (0) 844 856 5209

Email: info@gemmalighting.com





**LIGHTING
LIMITED**

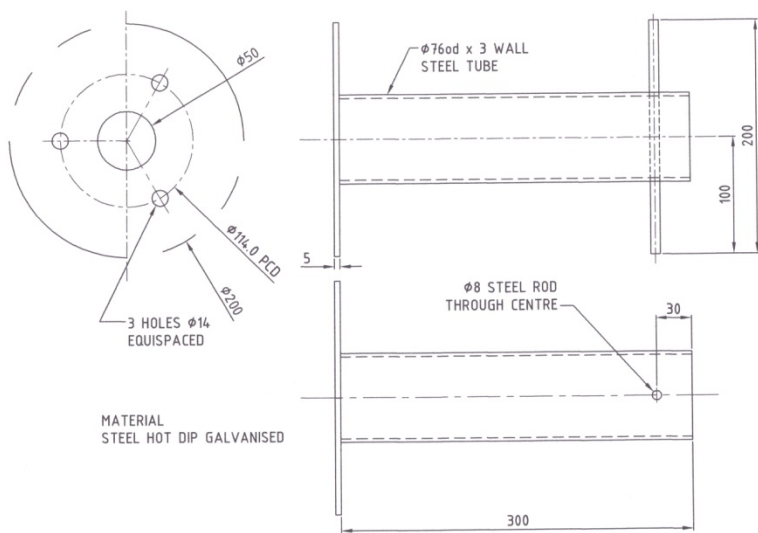
Nelson 16 XL110 - LED Bollard



Option 1:

**Flange Plate and
300mm Root
Mount.**

Code: FIX054



GEMMA LIGHTING LIMITED
NELSON BOLLARD ROOT MOUNT
DATE 29-3-11 DRAWN: SH

Gemma LIGHTING LIMITED

Unit 3, Marshlands Spur
Farlington
Portsmouth
Hampshire
PO6 1RX

Tel: +44 (0) 844 856 5201
Fax: +44 (0) 844 856 5209

Email: info@gemmalighting.com

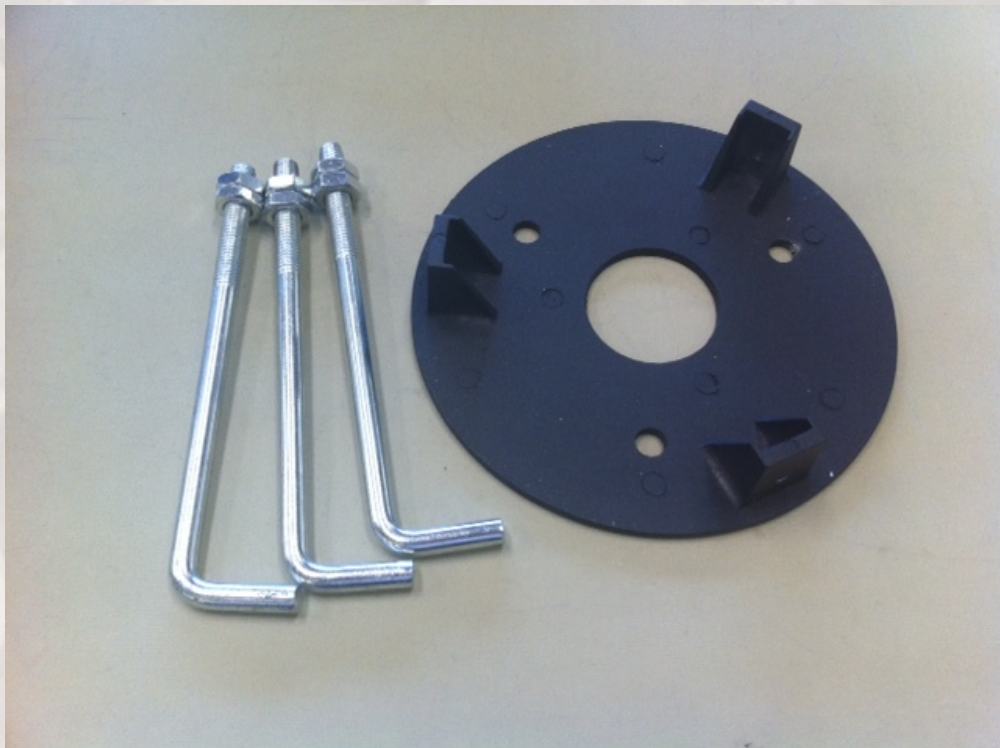


Above: CAD drawing for Nelson Flange plate and Root Mount.



LIGHTING
LIMITED

Nelson 16 XL110 - LED Bollard



Option 2: Flange Plate and 3 X M10 by 170mm Anchor Bolts. Code: FIX0053

Gemma LIGHTING LIMITED

Unit 3 , Marshlands Spur
Farlington
Portsmouth
Hampshire
PO6 1RX

Tel: +44 (0) 844 856 5201

Fax: +44 (0) 844 856 5209

Email: info@gemmalighting.com

