

Sovereign 72 XL110 – LED High Bay

Sovereign Range:

Sovereign 48 XL110 AC

Sovereign 72 XL110 AC

The **Sovereign 72 XL110** LED lighting solution is a environmentally friendly, energy saving, replacement for traditional Low Bay Lighting Solutions.

This LED Low Bay light is ready for connection to either to a 230Volt 50Hz supply or a 110Volt 60Hz supply.



The **Sovereign 72 XL110** can significantly reduce energy consumption and cut carbon emissions. Ideal for reducing expenditure and helping with environmental issues.

This LED light is suitable for illuminating warehouses, cold stores, stockrooms, workshops, tunnels, railway stations, and other industrial applications that require widely distributed, glare free light, and reliable low maintenance lighting.

Note: All LEDs are encased in a compound that will give them protection from any ingress of liquids or solids and all other electronic components are enclosed in an IP66 rated assembly.

Key Benefits of LED Lighting:

- Long life span > 100,000hrs.
- Low Power Consumption.
- Low maintenance costs.
- No Bulb replacements.
- More power to light than power to heat.
- Low carbon emissions.
- Excellent colour rendition.
- Fixtures contain no mercury or lead.
- Reduced Light pollution.
- Higher Efficacy = More lumens per watt.

Added Benefits For Cold Stores:

- LED Lighting does not diminish in cold temperatures.
- LED's strike instantly in the cold allowing lighting to be turned off in periods of inactivity.
- LED's use up to 75% less energy reducing refrigeration load.
- LED's create a white light similar to daylight allowing employees to locate goods efficiently.
- Much Safer – No glass to break, no white-hot filament, no noxious fumes.
- LED performance inherently increases as operating temperatures drop.

Gemma LIGHTING LIMITED

Unit 3 , Marshlands Spur
Farlington
Portsmouth
Hampshire
PO6 1RX

Tel: +44 (0) 844 856 5201
Fax: +44 (0) 844 856 5209

Email:
info@gemmalighting.com



Sovereign 72 XL110 – LED High Bay

Specifications: Sovereign 72 XL110 - LED Flood Light

Sovereign Range:

Sovereign 48 XL110 AC

Sovereign 72 XL110 AC

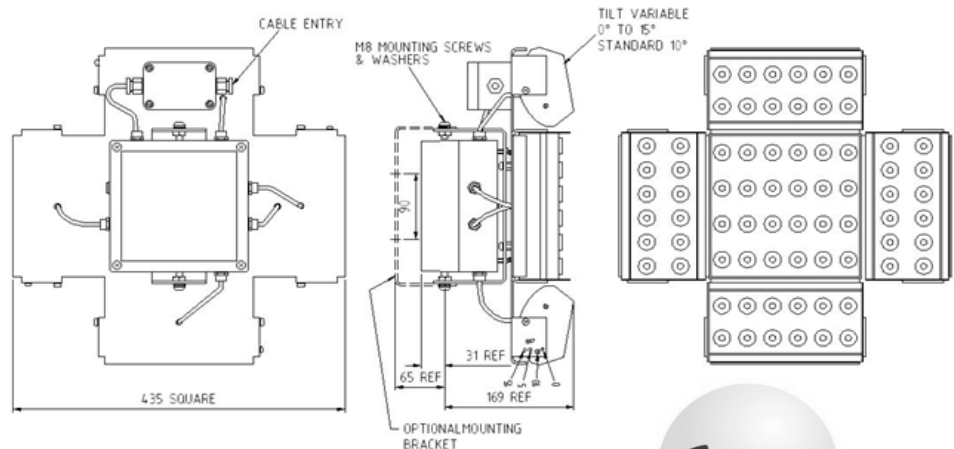
	SILVER	BLACK
Product Code	S72-A001-F3	S72-A016-F3
Power Consumption LED's	82.08 Watts	
Power Consumption Driver	5.92 Watts	
Total Power Consumption	87.94 Watts	
Input Voltage	90 – 264Vac	
Input Frequency	47 – 63Hz	
Light Source	1.14 W High Power LED	
LED QTY	72	
Total LED Output	7920 lm	
Efficiency (Typ.)	89%	
LED Colour	Cool White	
Colour Temp (K)	5400 - 6300 degrees K (Standard)	
CRI	Ra>70	
LED Lifespan	100,000 Hours	
Operating Temperature	-30 degrees C to + 50 degrees C	
Working Humidity	0 ~ 95%	
Turn on time	100ns	
Product Size (mm)	435mm x 435mm x 178mm	
Unit colour	Silver	
Net Weight	8.5Kg	
Mounting	Chain Mounted Bracket (Standard) Ceiling Mounted Bracket (M00233)	
Protection Rate	IP66 (Light Engine & Power Supply)	
Certification	RoHS, CE	
Warranty	3 Years	

Gemma LIGHTING LIMITED

Unit 3 , Marshlands Spur
Farlington
Portsmouth
Hampshire
PO6 1RX

Tel: +44 (0) 844 856 5201
Fax: +44 (0) 844 856 5209

Email:
info@gemmalighting.com

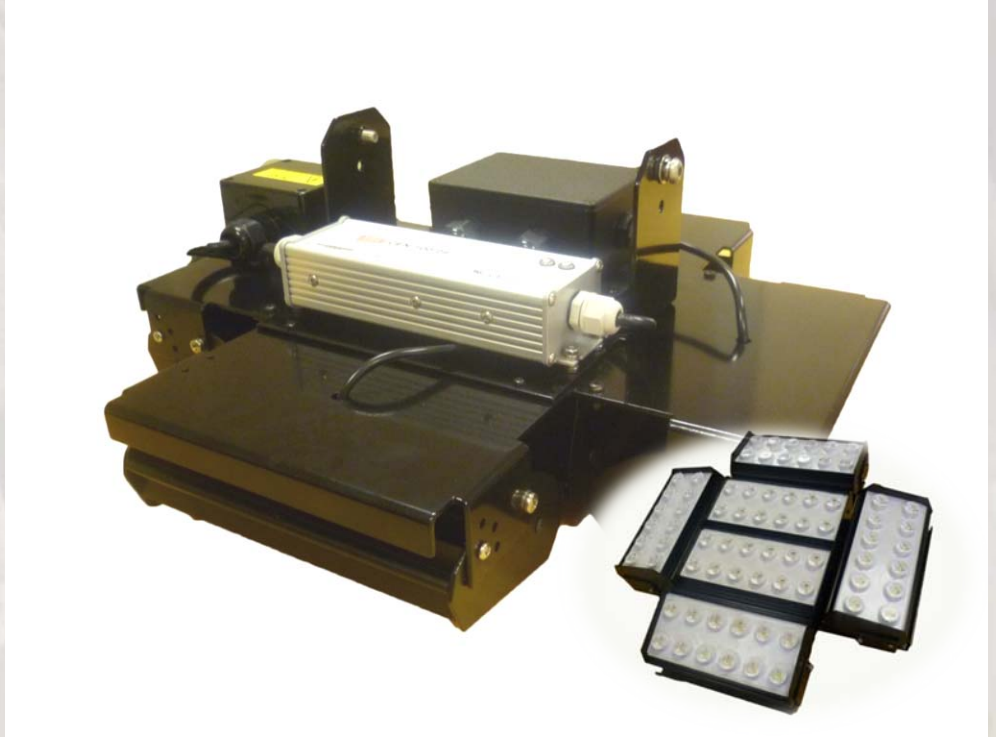


Sovereign 72 XL110 - LED High Bay

Sovereign Range:

Sovereign 48 XL110 AC

Sovereign 72 XL110 AC



Above: Sovereign 72 XL110 - Black



Above: Battery Back Up Box

The **Sovereign** LED Battery Back Up will power 24 LED's for 3 Hours.

Gemma LIGHTING LIMITED

Unit 3 , Marshlands Spur
Farlington
Portsmouth
Hampshire
PO6 1RX

Tel: +44 (0) 844 856 5201
Fax: +44 (0) 844 856 5209

Email:
info@gemmalighting.com



Specifications: Sovereign 72 XL110 – Plus Battery Back Up

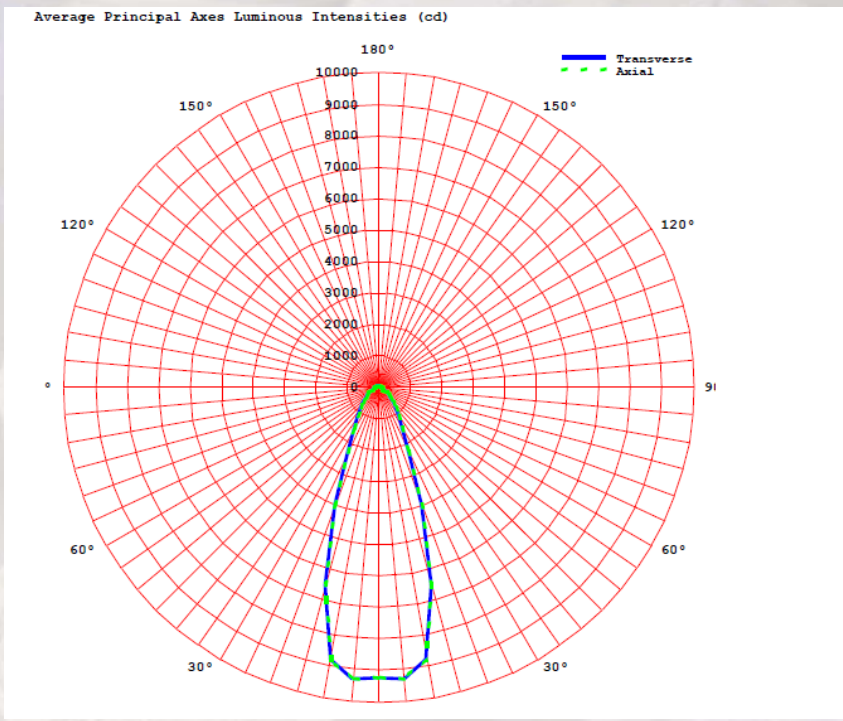
Product Code:	SILVER	BLACK
Sovereign 72 XL110 – Plus Battery Back Up	S72-A016-F3	S72-A024-F3

Sovereign 72 XL110 – LED High Bay

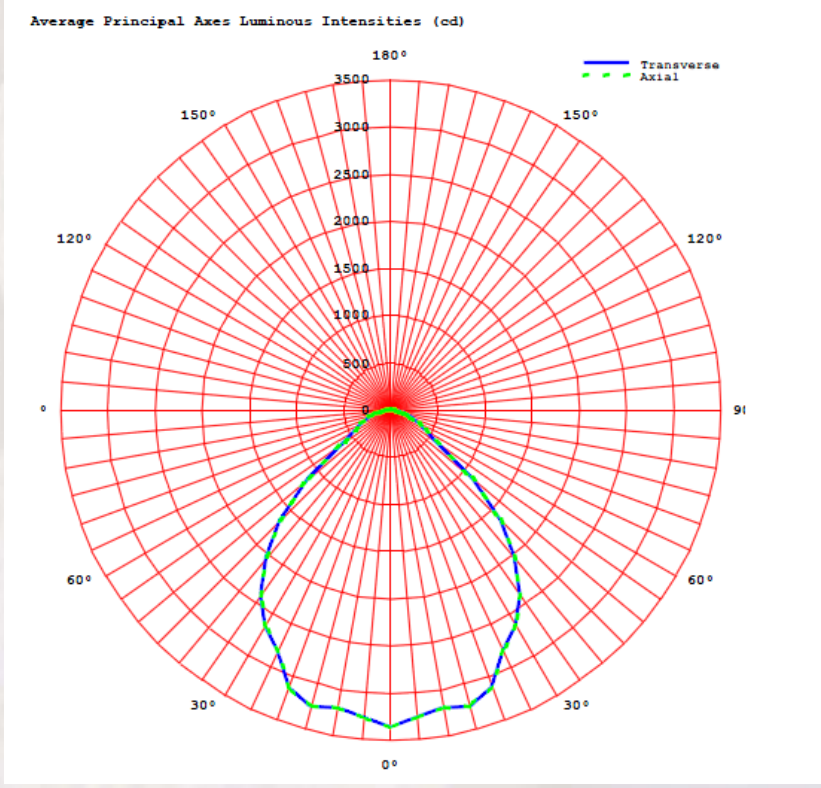
Sovereign Range:

Sovereign 48 XL110 AC

Sovereign 72 XL110 AC



Above: Average Principal Axes Luminous Intensities (cd) - Sovereign 72XL110 – 5 DEGREE MODULE TILT



Above: Average Principal Axes Luminous Intensities (cd) - Sovereign 72XL110 – 30 DEGREE MODULE TILT

Gemma LIGHTING LIMITED
 Unit 3 , Marshlands Spur
 Farlington
 Portsmouth
 Hampshire
 PO6 1RX

Tel: +44 (0) 844 856 5201
 Fax: +44 (0) 844 856 5209

Email:
info@gemmalighting.com

