



The Sovereign 72 XL110 LED lighting solution is an environmentally friendly, energy saving, replacement for traditional Low Bay Lighting Solutions.

This LED Low Bay light is ready for connection to either to a 230Volt 50Hz supply or a 110Volt 60Hz supply.

The Sovereign 72 XL110 can significantly reduce energy consumption and cut carbon emissions. Ideal for reducing expenditure and helping with environmental issues.

This LED light is suitable for illuminating warehouses, cold stores, stockrooms, workshops, tunnels, railway stations, and other industrial applications that require widely distributed, glare free light, and reliable low maintenance lighting.

Note: All LEDs are encased in a compound that will give them protection from any ingress of liquids or solids. All other electronic components are enclosed in an IP66 rated assembly.

Sovereign 72 XL110

Internal Lighting



Features

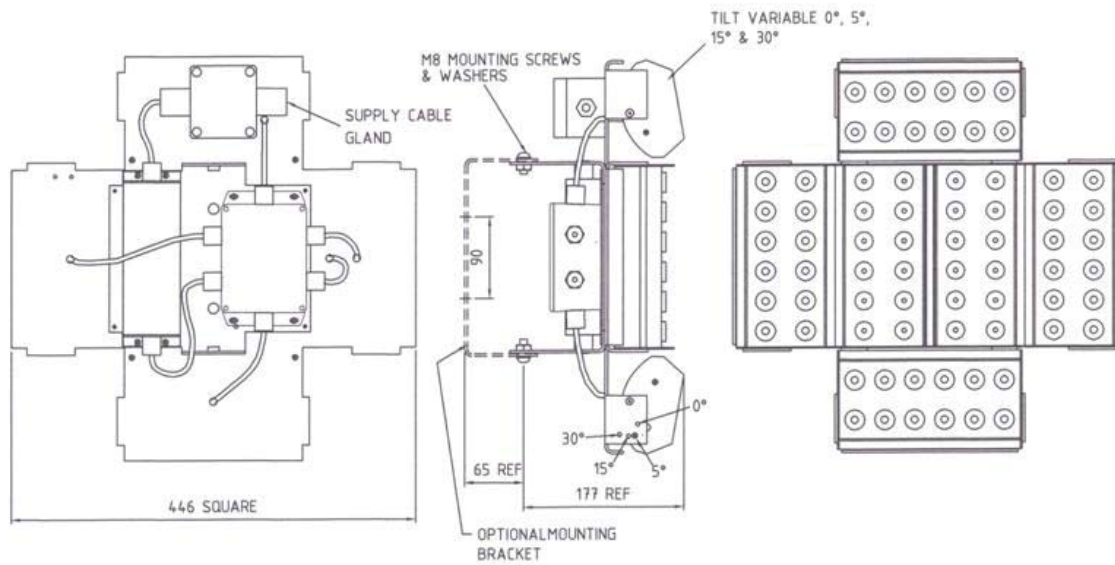
- Instant strike up time.
- Can work at -30 degrees C.
- Achieves energy savings of up to 70% in comparison to traditional solutions.
- Ceiling mounting bracket available.
- Adjustable side pods for maximum flexibility at different heights.
- High Quality - UK Made

Applications

- Cold Stores
- Freezer Centres
- Warehouses
- Factories
- Manufacturing
- Industrial Plants

www.gemmalighting.com

0844 856 5201



Specifications

	AC
Product Code (Silver)	S72-A001
Product Code (Silver & Battery Back Up)	S72-A016
Product Code (Black)	S72-A014
Product Code (Black & Battery Back Up)	S72-A024
Power Consumption LED's	82.08 Watts
Power Consumption Driver	10.92 Watts
Total Power Consumption	93.00 Watts
Input Voltage	90 - 264Vac
Input Frequency	47 - 63Hz
Light Source	1.14 W High Power LED
LED QTY	72
Total LED Output	7920 lm
Efficiency (Typ.)	89%
LED Colour	Cool White
Colour Temp (K)	5400 - 6300 degrees K(Standard)
CRI	Ra>70
LED Lifespan	100,000 Hours
Operating Temperature	-30 degrees C to + 50 degrees C
Working Humidity	0 ~ 95%
Turn on time	100ns
Product Size (mm)	435mm (W) x 435mm (D) x 178mm (H)
Unit colour	Silver or Black
Net Weight	8.5 Kg
Mounting	Option 1: Chain Mounting (Standard) Option 2: Ceiling Mounting Bracket -Moo233 (Optional)
Protection Rate	IP66 (Light Engine & Power Supply)
Certification	RoHS, CE
Warranty	3 Years

www.gemmalighting.com

0844 856 5201