

# Jupiter 36 XL100 - LED Street Light

## Jupiter LED Street Light Range

Jupiter 24 XL100 AC  
Jupiter 24 XL100 DC

Jupiter 36 XL100 AC  
Jupiter 36 XL100 DC

Jupiter 48 XL100 AC  
Jupiter 48 XL100 DC

Jupiter 60 XL100 AC  
Jupiter 60 XL100 DC

The **Jupiter 36 XL100** luminaire is a street and area lamp ready for connection to either AC mains power supply or our Mercury solar power management unit, which provides a flexible lighting solution where mains power is not available or desired.

The Jupiter 36's applications range from lighting roads to car parks, pathways and public areas, and when used with our Mercury solar powered management unit, the costs associated with mains powered lighting can be avoided.



Note: All LEDs are encased in a compound that will give them protection from any ingress of liquids or solids and all other electronic components are enclosed in an IP66 rated assembly.

### Specifications: Jupiter 36 XL100 - LED Street Light

	AC	DC
<b>Product Code</b>	J-36-4-2A-B	J-36-4-1D-B
<b>Power Consumption</b>	44 Watts	36 Watts
<b>Input Voltage</b>	230V AC 50Hz / 110V AC 60Hz	12 VDC
<b>Light Source</b>	1W High Power LED	
<b>LED QTY</b>	36	
<b>Total LED Output</b>	3600 lm	
<b>Operating Lumens at 25°C</b>	2880 lm	
<b>LED Colour</b>	Cool White	
<b>Colour Temp (K)</b>	6300 degrees K	
<b>CRI</b>	Ra>70	
<b>LED Lifespan</b>	>50,000 Hours	
<b>Operating Temperature</b>	-30 degrees C to + 70 degrees C	
<b>Working Humidity</b>	0 ~ 95%	
<b>Turn on time</b>	100ns	
<b>Product Size (mm)</b>	865 x 300 x 100	
<b>Unit colour</b>	Silver	
<b>Net Weight</b>	8.55 Kg	
<b>Mounting</b>	Supplied with adjustable 'C' type clamps for Outreach Mounting Arms with a Min of 43mmØ and Max of 56mmØ (Standard)	
<b>Protection Rate</b>	IP66 (Light Engine & Power Supply)	
<b>Certification</b>	RoHS, CE	
<b>Warranty</b>	3 Years	

**Gemma LIGHTING LIMITED**

Unit 3 , Marshlands Spur  
Farlington  
Portsmouth  
Hampshire  
PO6 1RX

Tel: +44 (0) 844 856 5201  
Fax: +44 (0) 844 856 5209

Email: [info@gemmalighting.com](mailto:info@gemmalighting.com)



# Jupiter 36 XL100 - LED Street Light

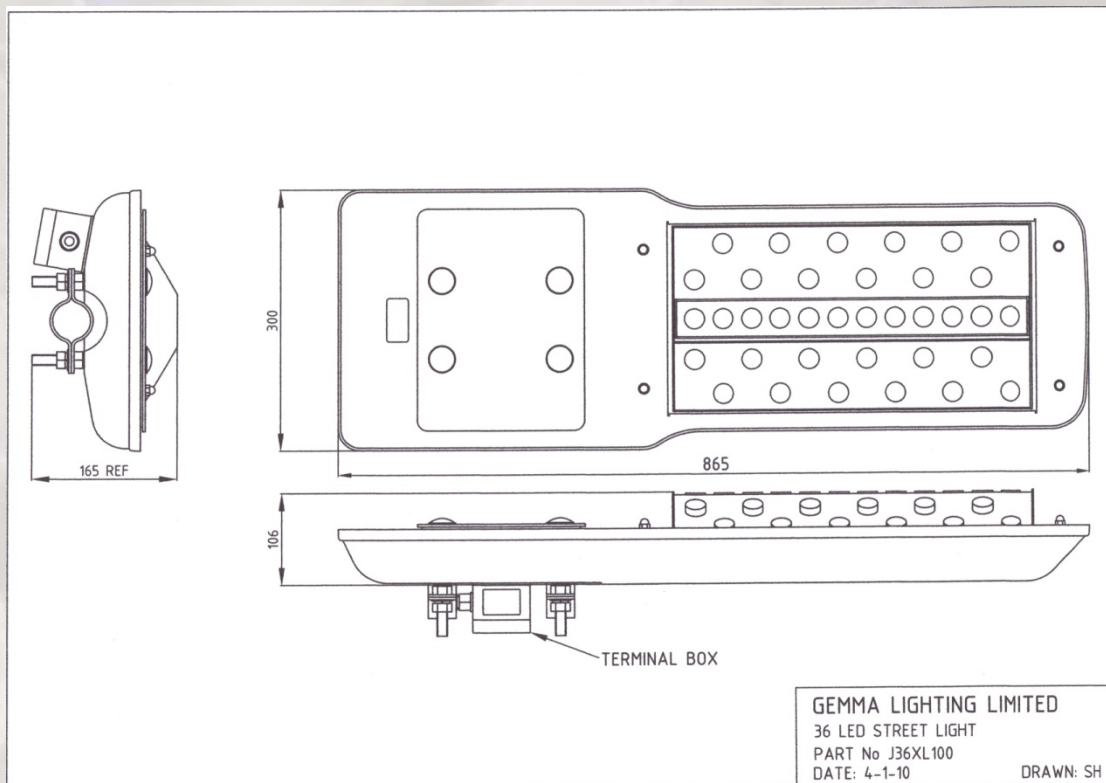
## Jupiter LED Street Light Range

Jupiter 24 XL100 AC  
Jupiter 24 XL100 DC

Jupiter 36 XL100 AC  
Jupiter 36 XL100 DC

Jupiter 48 XL100 AC  
Jupiter 48 XL100 DC

Jupiter 60 XL100 AC  
Jupiter 60 XL100 DC



Above: CAD diagram for Jupiter 36 XL100 – LED Street Light

**Gemma** LIGHTING LIMITED

Unit 3 , Marshlands Spur  
Farlington  
Portsmouth  
Hampshire  
PO6 1RX

Tel: +44 (0) 844 856 5201  
Fax: +44 (0) 844 856 5209

Email: [info@gemmalighting.com](mailto:info@gemmalighting.com)

