

Jupiter 48 XL100 - LED Street Light

Jupiter LED Street Light Range

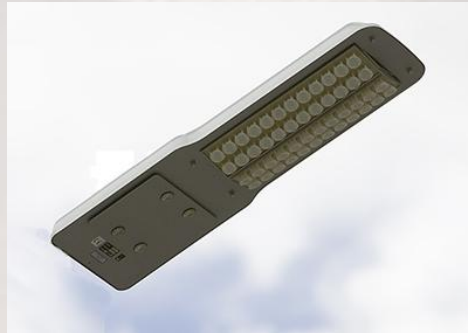
Jupiter 24 XL100 AC
Jupiter 24 XL100 DC

Jupiter 36 XL100 AC
Jupiter 36 XL100 DC

Jupiter 48 XL100 AC
Jupiter 48 XL100 DC

The **Jupiter 48 XL100** luminaire is a street and area lamp ready for connection to either AC mains power supply or our Mercury solar power management unit, which provides a flexible lighting solution where mains power is not available or desired.

The Jupiter 48 XL100 is ideal for lighting streets, car parks, pathways and public areas.



Note: All LEDs are encased in a compound that will give them protection from any ingress of liquids or solids and all other electronic components are enclosed in an IP66 rated assembly.

Specifications: Jupiter 48 XL100 - LED Street Light

Input voltage AC	230V AC 50Hz / 110V AC 60Hz
Input voltage DC	12 Volt
Power Consumption AC	65 Watts
Power Consumption DC	48 Watts
Operating temperature	-25 degrees C to + 70 degrees C
Total Lamp Lumens	4800 Lumens
Correlated colour temperature	4500 to 8000 degrees K
LED Lifespan	Typically 50,000 hours
Turn on time	100ns
Unit colour	Silver
Weight	10 Kg
Mounting	Supplied with clamps for 56mm pole standard.
Charging code for Un-metered Supply	4000650

Gemma Lighting and Displays
Unit 3 Grove Road
Cosham
Portsmouth
Hampshire
PO6 1LX

Tel: +44 (0) 23 9221 0015
Fax: +44 (0) 23 9221 0058

Email: sales@gemmalighting.com

