

## Jupiter 48 XL110 - LED Street Light

### Jupiter LED Street Light Range

Jupiter 24 XL110 AC  
Jupiter 24 XL110 DC

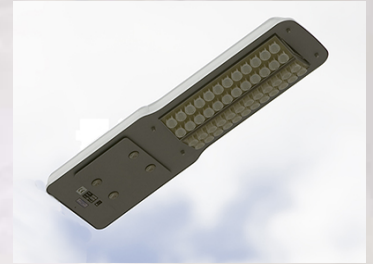
Jupiter 36 XL110 AC  
Jupiter 36 XL110 DC

Jupiter 48 XL110 AC  
Jupiter 48 XL110 DC

Jupiter 60 XL110 AC  
Jupiter 60 XL110 DC

The **Jupiter 48 XL110** luminaire is a street and area lamp ready for connection to either AC mains power supply or our Mercury solar power management unit, which provides a flexible lighting solution where mains power is not available or desired.

The Jupiter 48 XL110 is ideal for lighting streets, car parks, pathways and public areas.



Note: All LEDs are encased in a compound that will give them protection from any ingress of liquids or solids and all other electronic components are enclosed in an IP66 rated assembly.

#### Key Benefits of LED Lighting:

- Long life span > 50,000hrs.
- Low Power Consumption.
- Low maintenance costs.
- No Bulb replacements.
- More power to light than power to heat.
- Low carbon emissions.
- Excellent colour rendition.
- Fixtures contain no mercury or lead.
- Reduced Light pollution.
- Higher Efficacy = More lumens per watt.

#### Added Benefits for Car Parks:

- Solar Power options available where mains electricity is uneconomic.
- Pure Light – Excellent visual acuity. Ideal for CCTV covered areas.
- LED's create a white light similar to daylight allowing customers to locate their cars more efficiently.
- No light pollution into neighbouring properties.
- LED's strike instantly allowing lighting to be turned off in periods of inactivity and activated again with motion sensors.
- Impact resistant casing reduces the effects of vandalism.

**Gemma** LIGHTING LIMITED

Unit 3 , Marshlands Spur  
Farlington  
Portsmouth  
Hampshire  
PO6 1RX

Tel: +44 (0) 844 856 5201  
Fax: +44 (0) 844 856 5209

Email:  
info@gemmalighting.com



# Jupiter 48 XL110 - LED Street Light

## Jupiter LED Street Light Range

Jupiter 24 XL110 AC  
Jupiter 24 XL110 DC

Jupiter 36 XL110 AC  
Jupiter 36 XL110 DC

Jupiter 48 XL110 AC  
Jupiter 48 XL110 DC

Jupiter 60 XL110 AC  
Jupiter 60 XL110 DC

### Specifications: Jupiter 48 XL110 - LED Street Light

	AC	DC
<b>Product Code</b>	J48-A001-E2	J48-D001-D2
<b>Power Consumption LED's</b>	54.72 Watts	
<b>Power Consumption Driver</b>	9 Watts	N/A
<b>Total Power Consumption</b>	63.72 Watts	54.72 Watts
<b>Input Voltage</b>	90 – 264Vac	12 VDC
<b>Input Frequency</b>	47 – 63Hz	N/A
<b>Light Source</b>	1.14W High Power LED	
<b>LED QTY</b>	48	
<b>Total LED Output</b>	5280 lm	
<b>Operating Lumens at 25°C</b>	4224 lm	
<b>LED Colour</b>	Cool White	
<b>Colour Temp (K)</b>	6300 degrees K	
<b>CRI</b>	Ra>70	
<b>LED Lifespan</b>	50,000 > 80,000 Hours	
<b>Operating Temperature</b>	-30 degrees C to + 50 degrees C	
<b>Working Humidity</b>	0 ~ 95%	
<b>Turn on time</b>	100ns	
<b>Product Size (mm)</b>	865 x 300 x 100	
<b>Unit colour</b>	Silver	
<b>Net Weight</b>	8.55 Kg	
<b>Mounting</b>	Supplied with adjustable 'C' type clamps for Outreach Mounting Arms with a Min of 43mmØ and Max of 56mmØ (Standard)	
<b>Protection Rate</b>	IP66 (Light Engine & Power Supply)	
<b>Certification</b>	RoHS, CE	
<b>Charging code for Un-metered Supply</b>	4000650	
<b>Warranty</b>	3 Years	

**Gemma** LIGHTING LIMITED

Unit 3 , Marshlands Spur  
Farlington  
Portsmouth  
Hampshire  
PO6 1RX

Tel: +44 (0) 844 856 5201  
Fax: +44 (0) 844 856 5209

Email:  
info@gemmalighting.com



# Jupiter 48 XL110 - LED Street Light

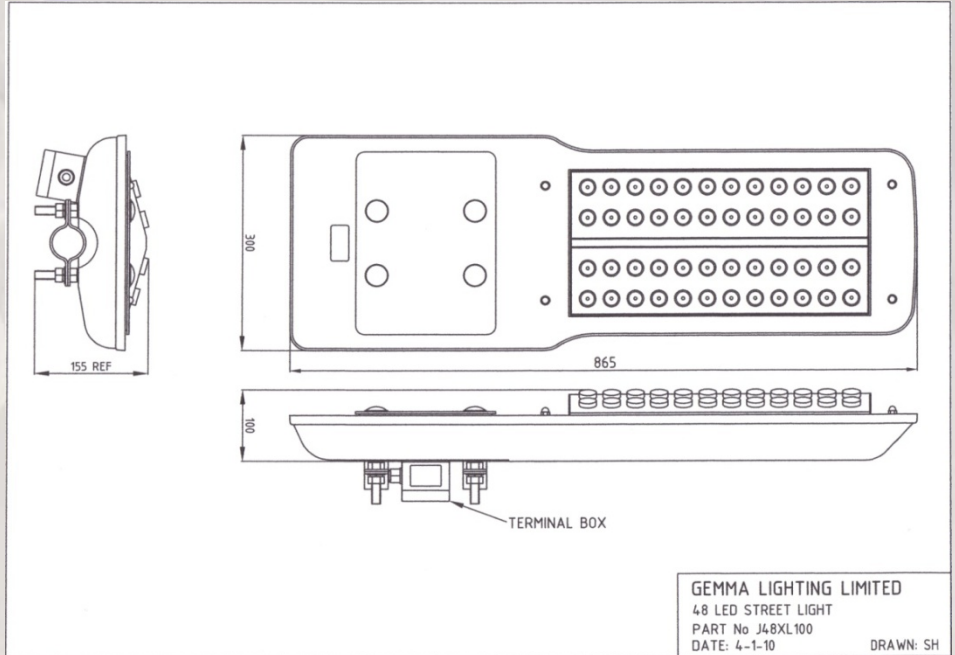
## Jupiter LED Street Light Range

Jupiter 24 XL110 AC  
Jupiter 24 XL110 DC

Jupiter 36 XL110 AC  
Jupiter 36 XL110 DC

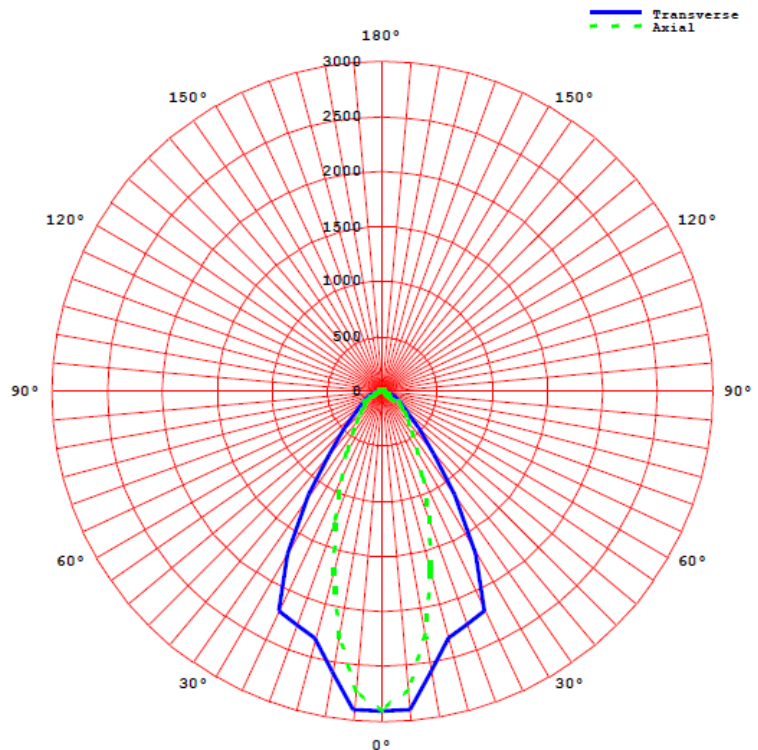
Jupiter 48 XL110 AC  
Jupiter 48 XL110 DC

Jupiter 60 XL110 AC  
Jupiter 60 XL110 DC



Above: CAD diagram for Jupiter 48 XL110 – LED Street Light

Average Principal Axes Luminous Intensities (cd)



Above: Average Principal Axes Luminous Intensities (cd)

**Gemma** LIGHTING LIMITED

Unit 3 , Marshlands Spur  
Farlington  
Portsmouth  
Hampshire  
PO6 1RX

Tel: +44 (0) 844 856 5201  
Fax: +44 (0) 844 856 5209

Email:  
info@gemmalighting.com

